

# Anita's Unbiased Block, the Make It Simpler® Way



## ABOUT THIS BLOCK

Fuse *Make It Simpler® Fusible Interfacing* diagonally across the backs of two identical fabric squares. Sew, cut and sew. The Interfacing winds up on the block's bias edges, stabilizing them.



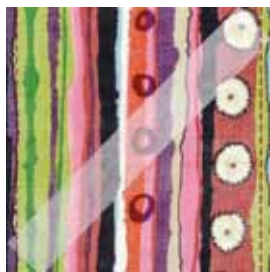
**1** Cut two identical 8 1/2" squares from stripe fabric. Position them wrong side up, same stripes running vertically. Fuse 10 1/2" strips of *Make It Simpler® Fusible Interfacing*, diagonally from lower left to upper right. Note wide green stripes positioned vertically at the left edges.



**2** Turn the LEFT square right side up. Rotate it to position the green stripe horizontal at bottom.



**3** Slide RIGHT square on top of left square. The squares will be right sides perpendicular to each other. Both green stripes must overlay at the lower left.



**4** Sew the pair together on two sides with a 1/4" seam allowance and back-stitching. Sew any two opposite sides together or sew any two adjacent sides together.



**5** \*Adjacent seam lines MUST 'corner' through the interfacing.



**6** This pair was stitched, adjacently, through the lower left corner. Note the interfacing in the same diagonal position, top and bottom.



**7** Cut the pair through the Interfacing.



**8** Open the units, press the seams and sew together with a 1/4" seam allowance.



**9** True up the block to 10 1/2" square.

## Make It Simpler

**Anita Grossman Solomon** teaches quilting. She authored *Make It Simpler Paper Piecing*, *Perfect Blocks in Minutes*, and *Rotary Cutting Revolution* for C&T Publishing. She has been a guest on *The Quilt Show*, *Quilt Out Loud* and *Simply Quilts*.

[www.MakeItSimpler.com](http://www.MakeItSimpler.com)

Make It Simpler® is a registered trademark of Anita Grossman Solomon

**VISIT** <http://makeitsimplerfusibleinterfacing.blogspot.com> for expanded directions and more examples of Anita's Unbiased Block.

© 2011 Anita Grossman Solomon

